

MUSITELLI

LIGHTING

CAMERAS

GRIP

MOTION CONTROL





Presentation

Photo Diego Rosenblatt

Who we are and what we do

- Musitelli is a company that provides film & digital cinema equipment solutions and technical services to the film and television community in Uruguay and Latin America.

Founded in 1997 by a passionate cinema technology family, the company has been evolving ever since, providing industry professionals with state-of-the-art equipment thus complying with the highest industry standards to help filmmakers make the most of their productions.

At Musitelli, filmmakers will find a wide offer of equipment packages with cutting edge digital cinema equipment ranging from cinema & digital camera gear, camera accessories, high-end primes and zoom lenses, lighting, grip equipment, cranes, dollies and remote heads.

Our mission

- As leading providers in the industry, we guarantee that our customers are offered top-quality equipment, service, and support in order to meet the market's most demanding requirements.



Photo Carlos Rosasco



Our equipment

- We cover a full range of film and digital cameras, lighting equipment, dollies, cranes and remote heads, grip, trusses, generators and trucks.

Cameras



Photo Leo Barizzoni



ARRI®

ARRI Alexa 35

RAISING THE BAR

4K Super 35 camera. ARRI's first new sensor for 12 years builds on the evolution of the ALEXA. The new REVEAL Color Science and ARRI Textures enhance in-camera creative control.



ARRI Alexa Mini LF Full Frame

LARGE FORMAT, SMALL CAMERA

Combining the compact size and low weight of the popular Alexa Mini with the large-format Alexa LF sensor, Alexa Mini LF brings exciting new creative possibilities to ARRI's large-format camera system.

Sony Venice

PHENOMENAL CREATIVE VERSALITY

High-end, 6K, Full Frame camera with a Sony designed 24x36mm sensor that has 15 stops of dynamic range and an artistic look. Venice supports every format from Full Frame 3:2 to Super35 4K full 18mm height 4:3, Anamorphic and Spherical, and everything in between.



ARRI Alexa Mini

COMPACT, LIGHTWEIGHT

Compact, lightweight, and self-contained. ARRI ALexa Mini is the small and versatile allrounder in the ARRI camera family.



RED V-Raptor ST Full Frame & Super 35 THE MOST POWERFUL AND ADVANCE RED EVER

Compact, fast, and full-frame the V-RAPTOR 8K VV + 6K S35 Dual-Format Camera is RED DIGITAL CINEMA's impressive introduction to their new DSMC3 platform. The V-RAPTOR offers multi-format capture in 8K VistaVision, 6K Super35, 4K, 3K Super16, and anamorphic options.

RED Komodo SHOCKINGLY SMALL

KOMODO 6K is smaller and more versatile than any comparable cinema camera in the industry allowing you to get shots you never thought possible featuring RED's unparalleled image quality, color science, and groundbreaking global shutter sensor technology in a shockingly small and versatile form factor.





Bárbara Álvarez, S.C.U. Testing the new Alexa 35

Film and digital cameras

DIGITAL

ARRI

ARRI Alexa 35
 ARRI Alexa Mini LF Full Frame
 ARRI Alexa Mini
 ARRI Alexa SXT Plus
 ARRI Alexa XT Plus
 ARRI Alexa Classic Plus

RED

RED V-Raptor
 RED Komodo 6K
 RED Weapon Helium
 RED EPIC Dragon
 RED Scarlet

Sony

SONY Venice Full Frame
 SONY Venice Rialto
 SONY F55
 SONY FX-3

HIGH SPEED

High speed

Phantom Flex High Speed 2K

FILM

ARRI

Arricam Studio 35mm
 Arriflex 235 35mm
 Arriflex 435 XTreme 35mm
 Arriflex 35 III 35mm



Lenses



Carl Zeiss Supreme Full Frame

CINEMATIC SENSOR COVERAGE AND HIGH SPEED

The ZEISS Supreme Prime lenses are designed to cover cinematic sensors from Super 35 and smaller to full frame and beyond (FF+), making them ideal for current and future camera systems. With most lenses at T1.5 the Supreme Primes demonstrate their unsurpassed craftsmanship in tricky low-light environments.



Blackwing7 Full Frame

TUNABLE LARGE FORMAT LENSES

Blackwing7 optics exhibit unique imaging properties which arise from the introduction of controlled distortion during the development and manufacturing processes. This distortion is modular and allows a level of tuneability over key parameters which shape many creative characteristics of the lenses.





Leitz M 0.8

A NEW WAY TO LOOK AT LIGHT

For over 60 years the M full frame lenses have captured unique, iconic images around the world. Now Leitz Cine Wetzlar, sister company to Leica Camera, is bringing the characteristics of these lenses directly to the cinema world with the M 0.8 lenses. The M 0.8 lenses interpret light and skin tones with a unique sense of clarity, color and charisma.

Cooke Anamorphic

COOKE LOOK AND OVAL BOKEH

Harness all of the anamorphic lens characteristics demanded by filmmakers today with the Cooke Look and oval bokeh. Achieve exceptional shape, depth and form with unparalleled optical and mechanical performance.



Lenses

Full Frame

Carl Zeiss Supreme
Carl Zeiss Supreme Radiance
Blackwing7
Leitz M 0.8
Canon K35

Zoom Angenieux EZ1 45-135
Zoom Angenieux EZ2 22-60

Super 16

ARRI Zeiss Ultra 16
Zoom Canon 6.6 – 66

Anamorphic Super 35

Cooke Anamorphic /i 2X

Super 35

Cooke Mini S4/i
Cooke Mini S4/i Uncoated
Cooke S4/i
Cooke Speed Panchro TLS
Leitz Summicron-C
ARRI Zeiss Ultraprime
Carl Zeiss Standard
Carl Zeiss Super Speed

Zoom Angenieux Optimo 15-40
Zoom Angenieux Optimo Style 25-250
Zoom Angenieux Optimo 24-290
Zoom ARRI Alura 15.5-45
Zoom ARRI Alura 18-80
Zoom ARRI Alura 45-250
Zoom Fujinon Cabrio 19-90

Specialty Lenses

Petzval TLS 58
Petzval TLS 85
Clairmont Swing & Shift

Macro

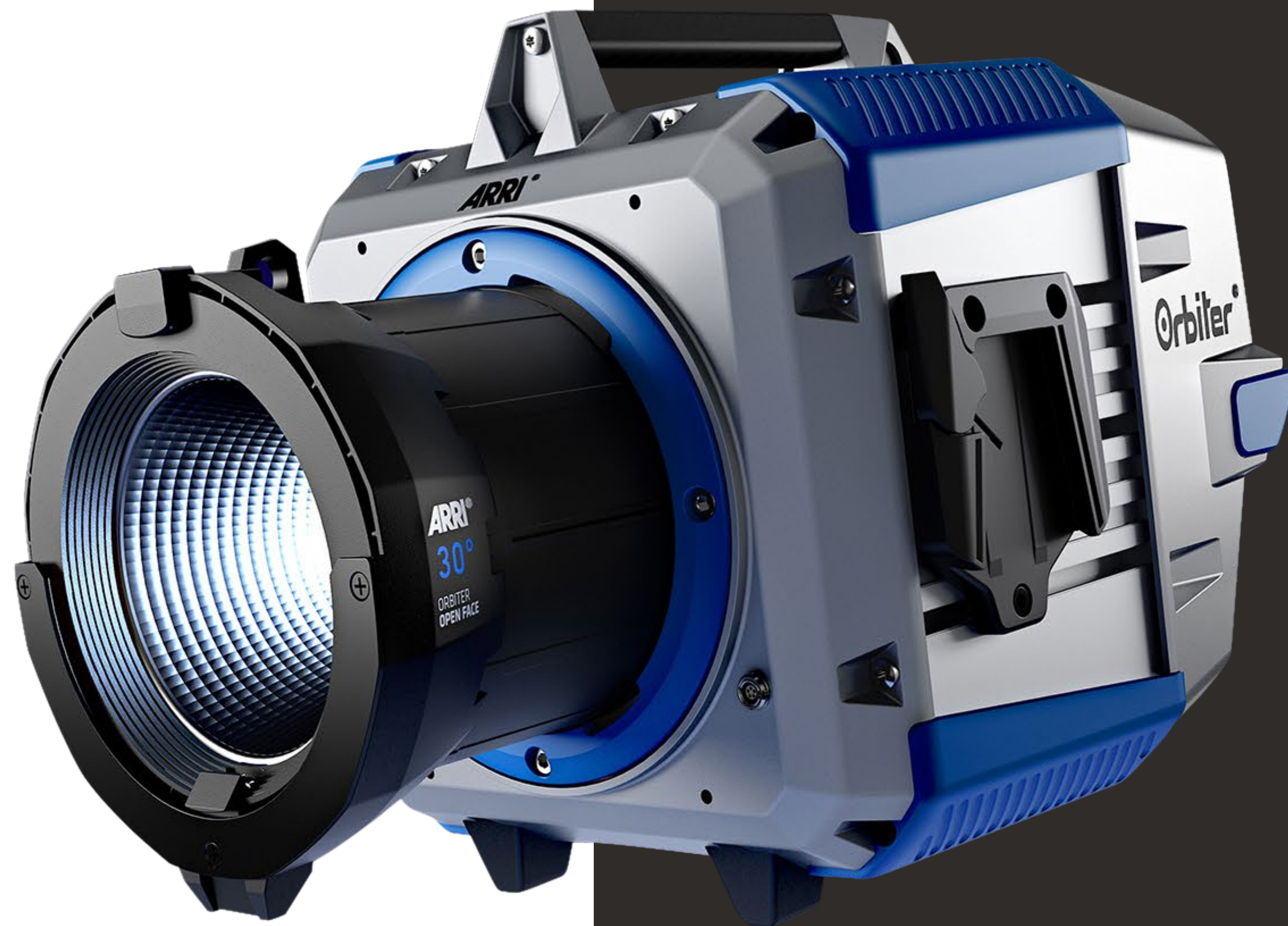
OpTex/Leica 60 Macro
Laowa 24 mm Macro Probe
Laowa 24mm 2x PeriProbe
ARRI Master Diopter
Leitz Macrolux Diopters



Photo Leo Barizzoni

Lighting





Orbiter[®]

ARRI Orbiter

ILLUMINATION | RESHAPED

Orbiter is an ultra-bright, tunable, and directional LED fixture. All systems in Orbiter are completely new and designed with versatility in mind. Orbiter's new six-color light engine delivers a wide-color gamut and outstanding color rendition across all color temperatures along with industry-leading, smooth dimming from 100 to 0%. With its changeable optics, Orbiter can transform into many different types of lampheads including open face, soft light, domes, and other future possibilities.



ARRI SkyPanels 30, 60, 120, 360-C SOFT LIGHTING | REDEFINED

SkyPanel is a compact, ultra-bright and high-quality LED soft light that sets a new standard for the industry. With a design focused on form, color, beam field and output, SkyPanel represents the culmination of more than a decade of research and development of LED technology at ARRI.

Briese Lighting FOCUS 77 & 180

The focus 77 & 180 makes the Briese-principle obvious. Fully focused it creates dramatic lighting with multiple screen differences between the centre and the edge of the picture. Almost like day and night. Perfect for strong accentuations. With just one setup you can create various lighting moods. Those characteristics make the focus be a main character at many Fashion-Productions.



ARRI Daylight M-SERIES | MORE LIGHT, LESS WORK

The M-Series encompasses ARRI's most innovative, Academy Award-winning daylight products featuring the unique, patented MAX Technology reflector. The MAX Technology enables lens-less, focusable lampheads that unify the advantages of a PAR and a Fresnel providing maximum light output.



Lighting

Briese Focus 77 – HMI 1.2 ; 2.5
Briese Focus 180 – HMI 1.2 ; 2.5 ; 4K

Kit 8 tubes Astera RGB NYX LED
Kit 8 tubes Astera RGB Helios 60cms LED
Kit 8 tubes Astera RGB Titan 1m LED

ARRI SkyPanel 30-C LED
ARRI SkyPanel 60-C LED
ARRI SkyPanel 120-C LED
ARRI SkyPanel 360-C LED

ARRI Orbiter

Kinoflo Freestyle 21 DMX LED
Kinoflo Freestyle 31 DMX LED
Kinoflo Celeb 201 DMX LED
Kinoflo Celeb 401 DMX LED
Kinoflo Celeb 401Q DMX LED

Aputure LED
Aladdin LED
DMG Rosco LED
Falcon Eye LED
Litegear LED
Litepanel LED

Kinoflo 4, 2, 1 Bank 4Ft
Kinoflo 4, 2, 1 Bank 2Ft
Kinoflo Flathead
Kinoflo Vistabeam

Airstar Gaffair 1.2K Daylight
Airstar 4 KW Sphere
Airstar Hybrid 8400

HMI Joker 200
HMI Joker 400
HMI Joker 800

HMI ARRI Pocket Par 125W
HMI Pocket Par Lite 200W
HMI Pocket Par Lite 400W

HMI ARRI Par 575W
HMI ARRI Par 1.200W
HMI ARRI Par 4.000W
HMI ARRI Par 6.000W
HMI ARRI Par 12.000W

HMI ARRI M18 1.800W
HMI ARRI M40 4.000W
HMI ARRI M90 9.000W
HMI ARRIMAX 18.000W

HMI ARRI Fresnel 575W
HMI ARRI Fresnel 2.5000W
HMI ARRI Fresnel 4.000W
HMI ARRI Fresnel 12.000W
HMI ARRI Fresnel 18.000W

Kit Dedolight 4X12V 1000W

Open Face Arrilite 650W
Open Face Arrilite 1.000W
Open Face Arrilite 2.000W

Fresnel ARRI 150W
Fresnel ARRI 300W
Fresnel ARRI 650W
Fresnel ARRI Studio & True Blue 1.000W
Fresnel ARRI Studio & True Blue 2.000W
Fresnel ARRI Studio & True Blue 5.000W
Fresnel ARRI Studio 10.000W
Fresnel ARRI Studio 20.000W
ARRI Ruby 7
Maxibrute 9 Lamps 1.000W PAR 64
Dinolight 12 Lamps 1.000W PAR 64

Arrilite 650X4 KIT
KIT Combo KIT
ARRI Softbank KIT
Dedolight 4X12V 1000W KIT

Chimera Quartz Bank Large 135x180 cms
Chimera Quartz Bank Medium 90x120 cms
Chimera Quartz Bank Small 60x80 cms
DoP Choice Snapgrid, Snapbags

Gaffers Control
Skynode Receivers
ETC Dimmer & Console Systems

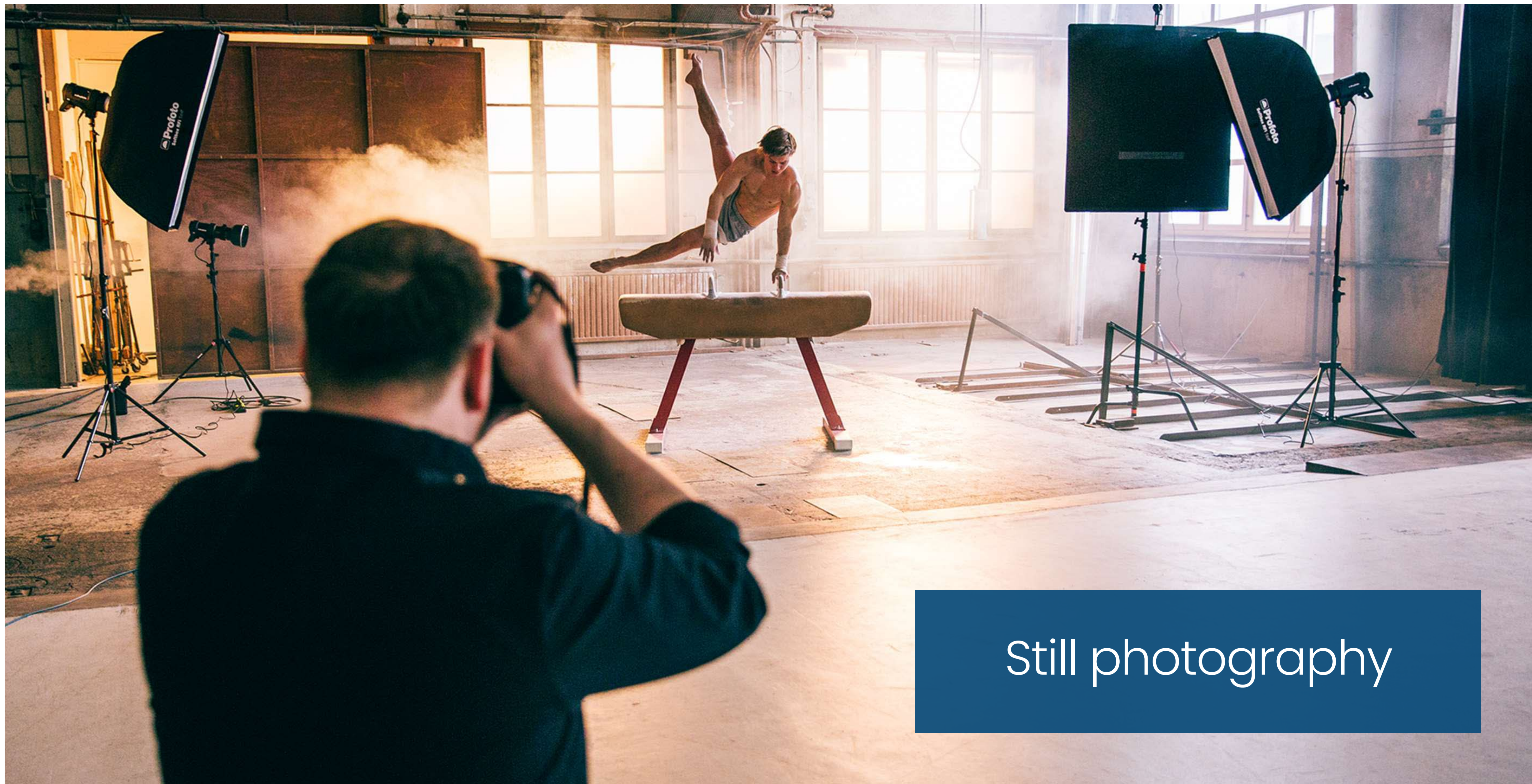


Photo Profoto



Profoto®

The light shaping company™

Profoto builds the highest quality photographic lights, from versatile On-camera or Off-camera flashes for on-location to powerful self-contained Monolights and high-performance state-of-the-art Pro pack and heads for in the studio.

Profoto Pro-10 flash

CINEMATIC SENSOR COVERAGE AND HIGH SPEED

Pro-10 isn't just fast. It's record-breaking. Our flagship flash can achieve a breathtakingly short flash duration of up to 1/80,000s. But even more impressive, both flash duration and recycling time are extremely short higher up the power scale than with any other flash. The unique combination of power and speed changes everything.



Profoto ProHead flash

THE CLASSIC

The classic ProHead that has lit more iconic photographs than any other studio flash head in the world is delivered with the equally iconic Profoto Zoom Reflector.

Profoto B1X flash

ON-LOCATION PHOTOGRAPHY

Ideal for on-location photography, the Profoto B1X sets the benchmark once again for cordless, battery-powered monolights. And with both TTL and HSS available, you're guaranteed the best light shaping experience possible on location, anywhere.





Motion control

Photo Ariel Ugolino



BOLT JR⁺

BOLT Junior Plus MOTION CONTROL

Bolt Junior Plus is a compact, lighter weight high-speed camera robot that's agile and small. The Bolt Jr. is an ideal solution where space, weight and mobility are key. 6 axis robotic arm on a high-speed base narrow enough to fit through a standard doorway.

Facility

reducto audiovisual hub

Since 2019 we are based in reducto, an audiovisual hub with sound stages that offers high quality services for the production of audiovisual projects, such as feature films, commercials, television series, videoclips, digital projects, and VFX, among others.



Photo Tali Kimelman



Camera



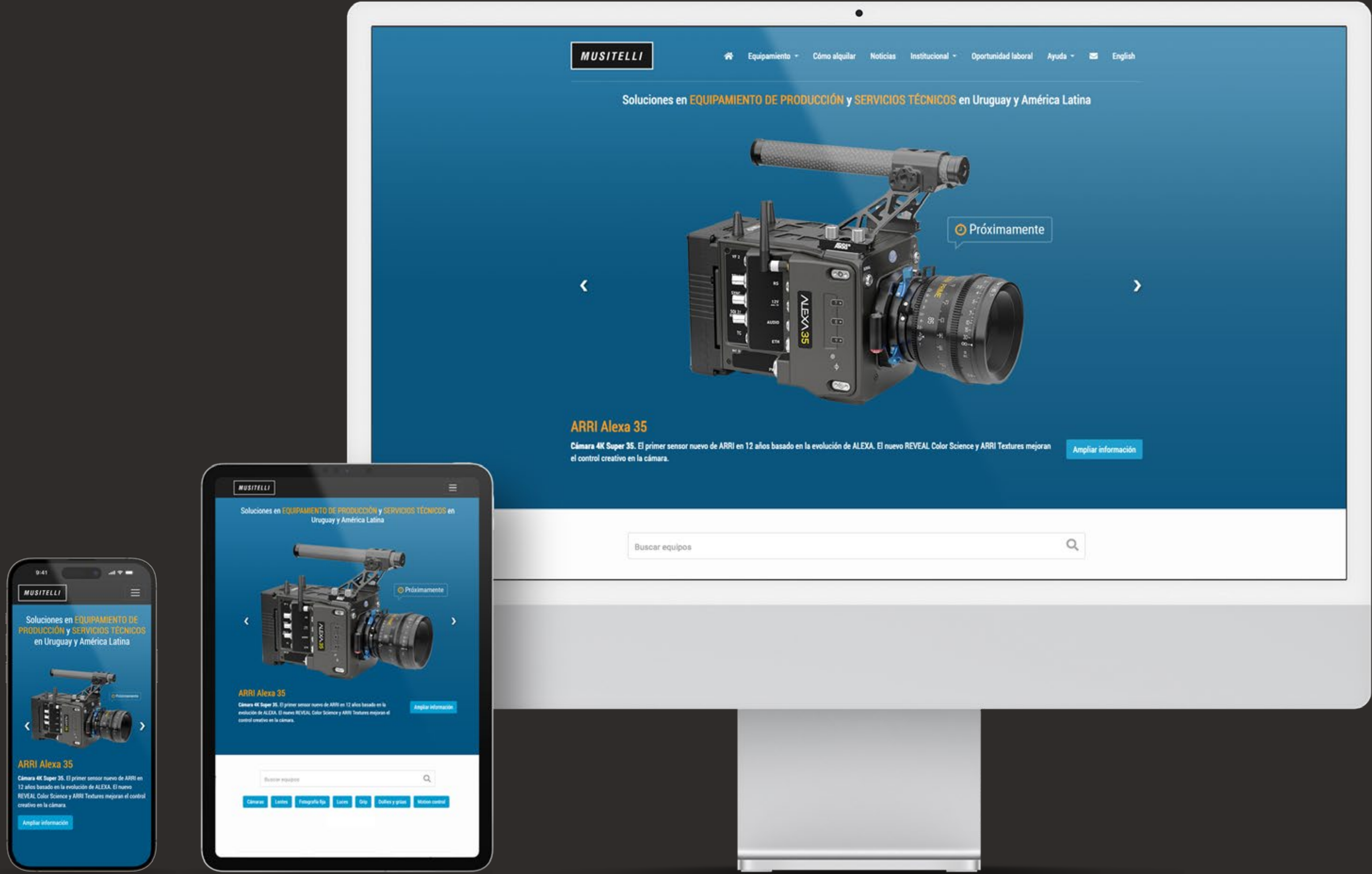
Lighting & Grip

www.musitelli.com

> OUR FIRST CONTACT POINT WITH CUSTOMERS

This site is updating permanently in order to display the catalog of currently available equipment as well as technical info for users.

This is a priceless tool for foreign productions, for it guarantees our capabilities. It also backs Uruguay as a professional and available option that meets the standards of the leading production centers.



MUSITELLI

LIGHTING | CAMERAS | GRIP | MOTION CONTROL

www.musitelli.com

Phone
(598 2) 203 5608

Fax
(598 2) 203 5608

Contact email
info@musitelli.com

Located in Reducto
Villardebó 1272, PC 11800

South America
Montevideo, Uruguay